

BUSINESS PROFILE

الأمنية العالمية للتقنية ش.م.ش

GLOBAL SECURITY TECHNOLOGY L.L.C

Your Gateway to Smart Technologies for a Safer Tomorrow

OUR COMPANY

VISION & VALUES

We are one among the leading companies in the recruitment of tracking, security, telecommunications and high-end technology products & solutions.

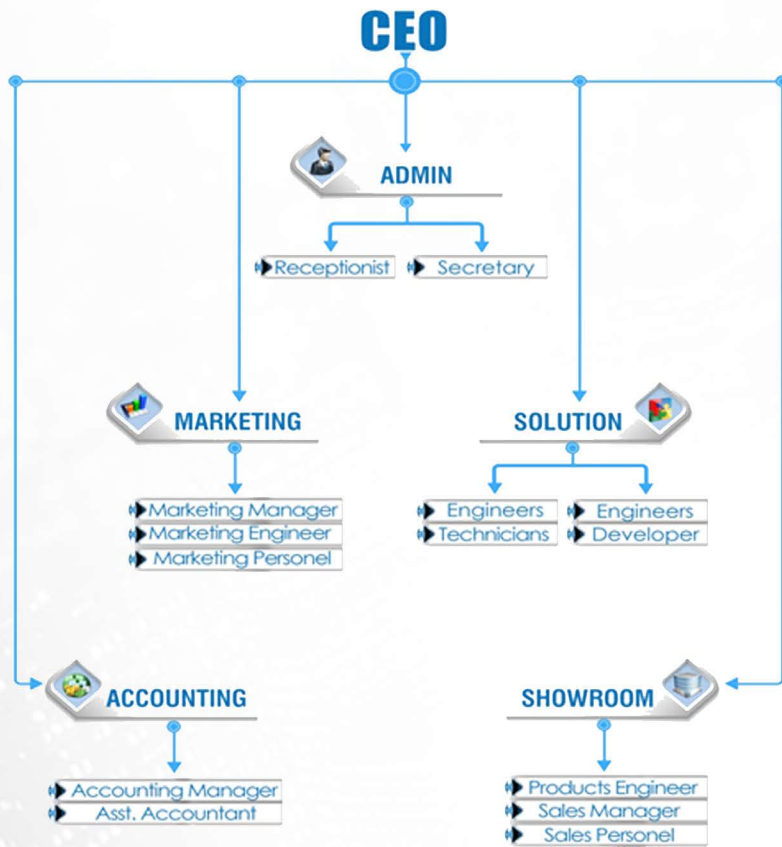
We deliver advanced products and intelligent solutions developed at our own solution center and research department in cooperation and partnership of giant group of companies and global factories that serve the diverse sectors of businesses with multiple technical products and solutions at all levels.



We **Believe** in
Continuous **Expansion** of
Our **Business**

Global Security Technology headquarter is based in Muscat, Oman

OUR TEAM



ORGANIZATION CHART



WHO WE SERVE

GOVERNMENT ORGANIZATIONS

EDUCATION & LEARNING

LOGISTICS & CARGO

E-COMMERCE & RETAIL

SPORTS & ENTERTAINMENTS

TRANSPORTATION

TELECOM

OIL & GAS

HOSPITALITY

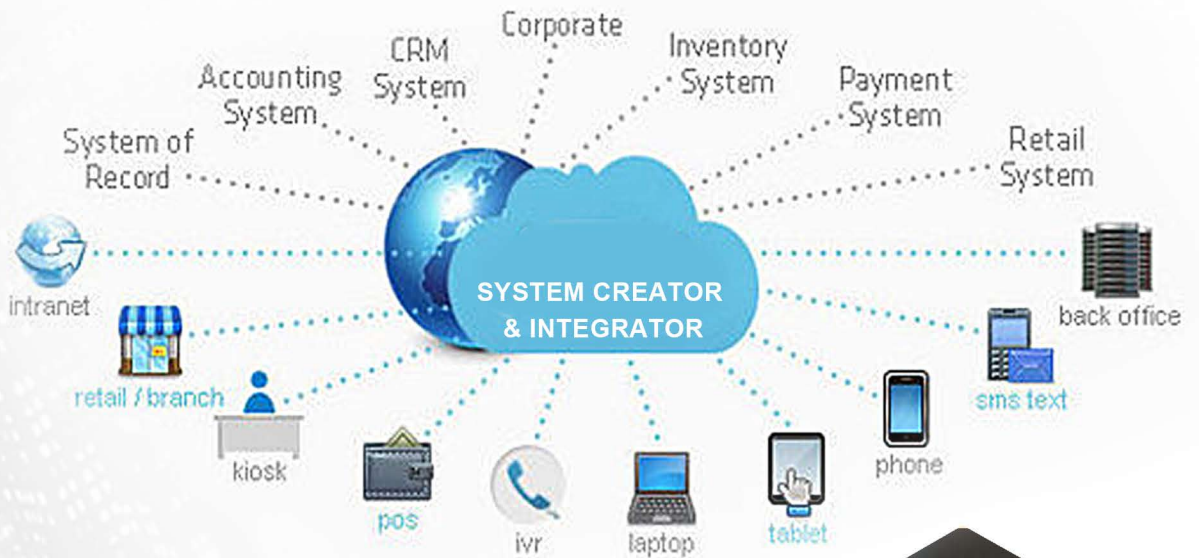
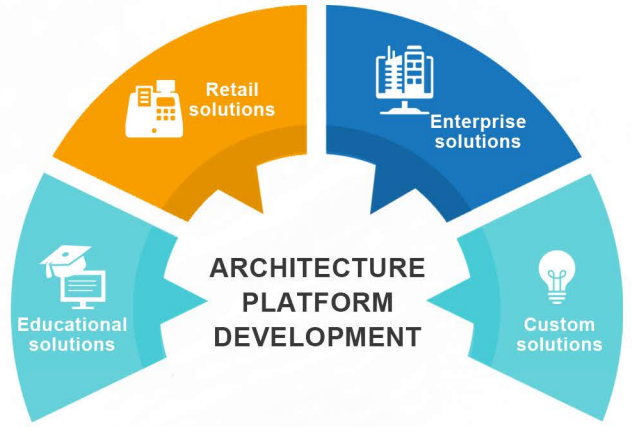
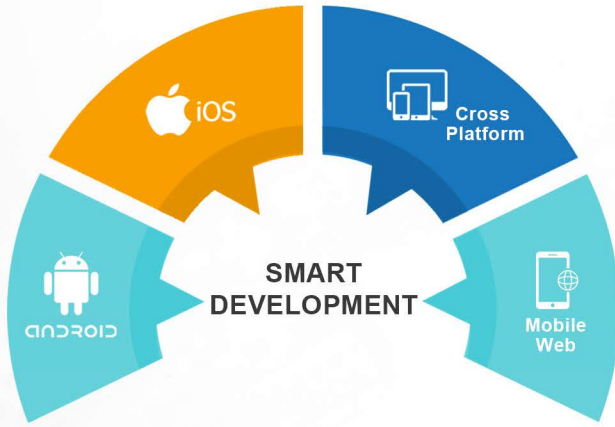
HEALTH CARE

HOME & OFFICE

AUTOMOBILE



SERVICES WE OFFER



OUR PRODUCTS

Our in-house developed Smart Transportation products are crafted with latest technologies in the market with utmost care to even minute details and are designed with a futuristic vision by our R&D team

S
O
F
T
W
A
R
E



WAJADTUHA

PERSONAL VEHICLE TRACKING

A ready to use out of the box all in one tracking & management solution for your personal vehicles.



DARBK SALAMA

SCHOOL BUS MANAGEMENT

A unique system designed for the protection and management of students and school buses with monitoring facility for school management, Local authorities as well as the parents.



WHEELTRACK 360

FLEET MANAGEMENT SOLUTION

safeguard and monitor every movement of vehicle fleets with the state of the art GPS tracking and management technology. Customized and automated reports. Multi-platform integration.

WAJADTUHA



SMART TRACKING SOLUTION

High-end video surveillance systems for both commercial and industrial sectors.

SYSTEM FEATURES

www.wajadtuha.com



Wajadtuha- The first and one of it's kind solution in the market designed with an aim to safe guard the private transportation. A smart and effective solution dedicated and focused to ensure highest level of security for the vehicles, individuals, families and the society in both private and public transportation sector.

Wajadtuha EYE



An all in one Dashcam and tracking solution with dual camera recording for both outside and inside the vehicle and built in Wi-Fi sharing.

Wajadtuha GPS



An intergrated OBD Smart Tracker with builtint Wi-Fi sharing. OBD interface provides in vehicle diagnostics data also to the smart phone application so that not only the location but also the health of your vehicles can be monitored through our Wajadtuha application.

DARBK SALAMAH

► SCHOOL BUS SECURITY, MONITORING AND MANAGEMENT SOLUTION

FEATURES

- Securing pick up and drop of students...
- Live Tracking of school bus & it's specified route throughout the journey.
- Better time management.
- Automated attendance and monitoring activity inside the bus.
- SMS / Apps Online notification to respective parents about their child's movement.
- All in affordable price.
- Many Others Features...

Online True Tracker **SMS/ App Alert** **Auto Attendance**

Emergency STOP

Live CCTV

Auto Alert in Sensitive Case **Anti-Theft**

Easy Installation **Other Customized Features**

Full Mobile Apps Set for Parent, Driver and School fleet Management

Portal Management

DARBK SALAMAH

Presented By **DAS** GLOBAL SECURITY TECHNOLOGY

Join Us with Social Media

Make your kid's school journey Safer than Ever

GST presents DARBK SALAMAH a complete solution from concept to completion by tracking all the steps your child takes during the full journey.

Come join us and help us to make a safer world for tomorrow's Generations.



DARBK SALAMAH

Presented By

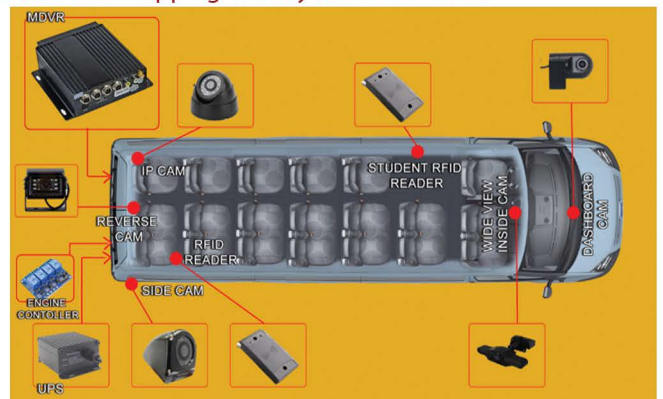
GLOBAL SECURITY TECHNOLOGY

FEATURES

- INSTANT, PERMANENT AND EFFECTIVE VISUAL MONITORING OF STUDENTS, THEIR LOCATIONS AND THE BUS, FROM THE MOMENT THE STUDENT GETS ON THE BUS, ARRIVES AT SCHOOL AND RETURNS HOME.
- THE CENTRAL SAFETY PATH SYSTEM, WHICH IS LINKED TO THE EDUCATIONAL PORTAL IN REAL TIME, AND CONSISTS OF SEVERAL SYSTEMS TO MANAGE AND FOLLOW UP ON SCHOOL STUDENTS AND BUS DRIVERS WITH THEIR BUSES.
- INTEGRATED BUS ROUTE CHARTING APPLICATION SYSTEM VIA ANDRIOD / IOS APP
- ANDRIOD / IOS APP SYSTEM
- ALERTS AND TEXT MESSAGING SYSTEMS TO FOLLOW THE STUDENT'S MOVEMENT AND DRIVER'S BEHAVIOR.
- AUTOMATIC DETECTION SYSTEM FOR THE DETENTION OF THE STUDENT IN THE BUS AFTER IT IS CLOSED AND ABANDONED BY THE DRIVER.
- STUDENT ATTENDANCE SYSTEM.
- REAL-TIME REPORTS AND STATISTICS.
- AUTOMATIC STUDENT COUNTER SYSTEM.
- STUDENT DESCENT AND ASCENT SYSTEMS TO THE EDGE.
- THE ABILITY TO ADAPT THE SYSTEM AND INSTALL IT WITH OTHER SYSTEMS PROGRAMMATICALLY.
- LOTS OF OTHER ADVANTAGES.

The darbk salamah system provides many special features that will allow the schools and students' families to track the route of school buses and inquire about many other cases related to buses through multiple service

Hardware Mapping - Full System with Video



Hardware Mapping - Partial System without Video



WHEELTRACK 360



▶ ALL IN ONE ENTERPRISE IVMS FLEET MANAGEMENT SOLUTION

www.wt360.wheeltrack.com



KEY FEATURES

- Real –time Vehicle Tracking
- Advanced Fleet Management
- Event Based Alerting
- Multiple Generated Reports
- Built-in & Custom Sensors
- Real-time Vehicle Position report
- Multiple Maps Source
 - Google Maps
 - Customs Maps
- Customizable POI
- Web-based Trip player, etc.
- Alerting Sensors

WheelTrack360 is one of the best in class GPS tracking solutions which can help you to affordably manage your company's vehicles, protect business and personal property, monitor/locate your assets. Wheeltrack is an advanced, real-time and multi-language tracking system which is reliable and effective cutting edge GPS vehicle tracking and fleet management.

SYSTEM ARCHITECTURE



Geospatial Mapping Platform

WheelTrack provides many Geospatial Mapping Platforms which offers client scalable, stable, flexibility, robustness for building and managing fleets. Wheel Track provides many Geospatial Mapping Platforms:

1. Google Maps including Road, Satellite & 3D View.
2. Custom Maps including specific areas defined or drawn of a client.



OUR SOLUTIONS

We are specialized in providing high-end security and IT solutions suitable for various private and public organizations.

 Intelligent Parking Solution

 Public Address System

 Gate Automation

 Network and Wireless Solution

 Home Automation

 Building Management System

 RFID Solutions

 Point of sale

 Fleet Management

 Smart Transportation

 CCTV System

 Time Attendance System

 Digital Sinage

 LED Screen

 Queue Management System

 E- learning

CCTV SOLUTION

► High-end video surveillance systems for both commercial and industrial sectors.



We use a mix of the most current and best in class cameras, lens, lighting, hardware, and software components to ensure uninterrupted and secure surveillance 24/7 which meets the requirements of client from multiple sectors, such as retail premises, educational establishments, industrial sites, offices, high-secure government facilities, Oil & Gas, banks etc.

TYPES OF CAMERAS

- DOME CAMERA
- BULLET/GUN CAMERA
- PTZ CAMERA
- 360° PANORAMIC CAMERA
- LPR(License plate recognition Camera)
- MOBILE CAMERA(for deployment in different types of vehicles)
- EXPLOSION PROOF CAMERA

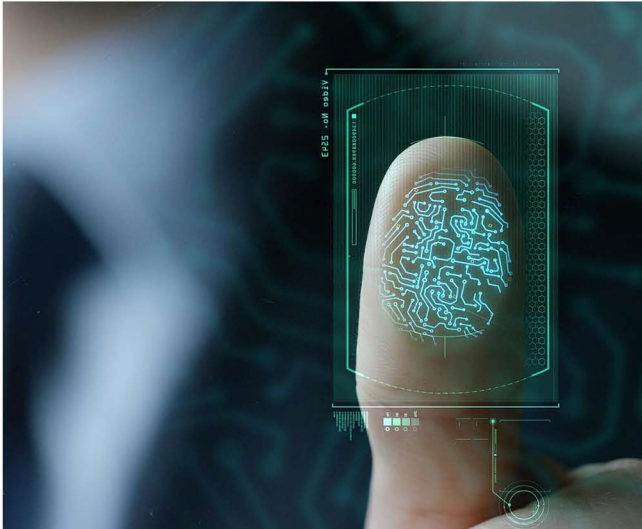


PROMINENT BRANDS USED FOR OUR PROJECT DEPLOYMENT



BIOMETRIC SOLUTIONS

BIOMETRIC ACCESS & TIME ATTENDANCE SOLUTIONS

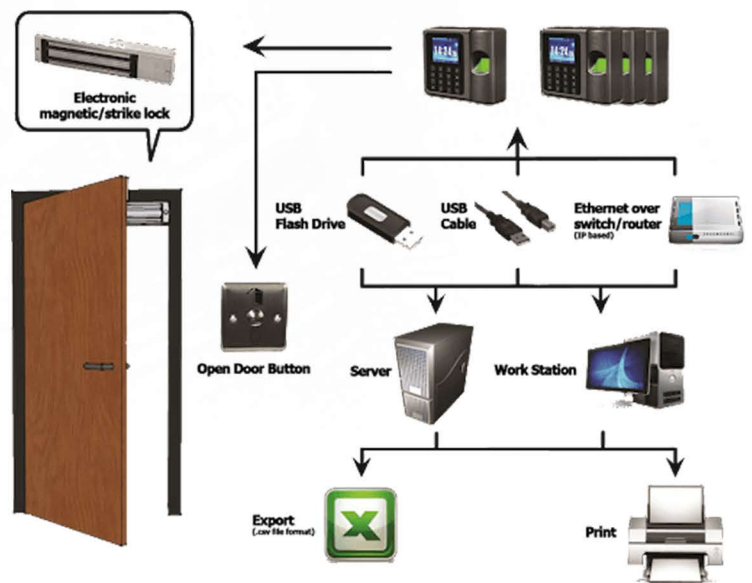


TYPES OF BIOMETRIC SYSTEMS

- FINGERPRINT ACCESS & ATTENDANCE
- FACIAL RECOGNITION SYSTEM
- IRIS SCANNERS
- INTEGRATED FACIAL RECOGNITION SYSTEM WITH TEMPERATURE SENSORS

Biometric Systems provided by Leamratech is with the best in class technology, with its prime focuses in distributions of products such as attendance system, fingerprint scanners, facial recognition, security & surveillance products.

ACCESS CONTROL SYSTEM ARCHITECTURE



PRODUCTS

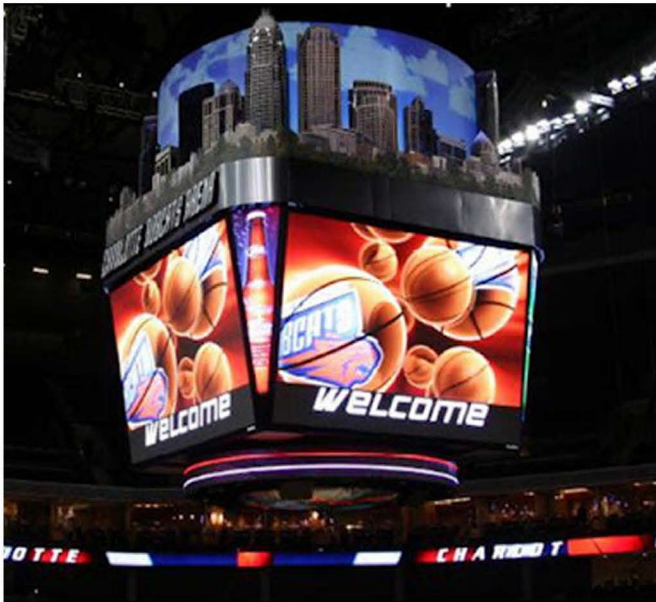


PROMINENT PARTNERS



LED SCREEN

► High-end large format LED video walls and advertisement displays.



GST is tied up with world-class manufacturer and provider of high quality LED displays solutions. We supply LED media facades, indoor and outdoor LED screens, and flexible curtains. GST is one of the leading LED solution provider for: stadiums, sports, arenas, advertisement screens, architectural and stage.



TYPES OF LED SCREENS

- OUTDOOR LED SCREEN
- INDOOR LED SCREEN
- MOBILE LED SCREENS
- 360° PANORAMIC CAMERA
- FLEXIBLE LED SCREENS
- PORTABLE STAGE LED SCREENS
- LED SPORTS SCORE BOARDS



CERTIFIED GOLD PARTNERSHIP
WITH THE FOLLOWING WORLDCLASS
MANUFACTURERS



WE USE THE BEST IN CLASS LED CHIPS
IN THE MARKET FROM



GATE AUTOMATION

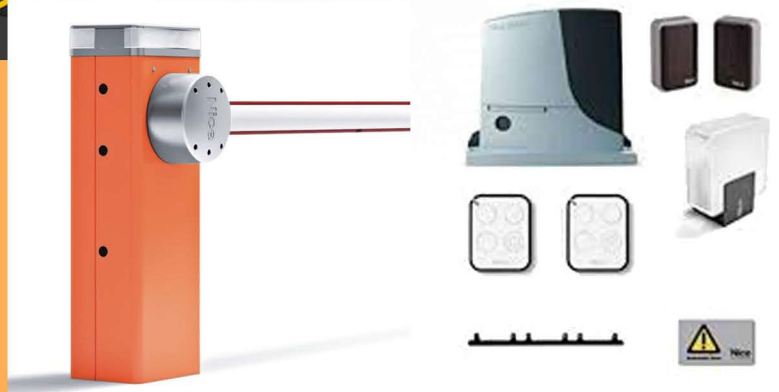
► GATE AUTOMATION FOR PERIMETER PROTECTION



Barrier gates are the ideal solution if you need to control vehicle transit in public parking areas, car parks, private and block of apartment entrances, even when the traffic is heavy. It also helps in the control of the flow of people with multiple security and access control options. They are made of a motor body and control unit, protected by a case with different finishes, in particular in stainless steel for applications in critical environment conditions, like heavy traffic areas or near the sea.

TYPES OF GATE BARRIERS

- SLIDING GATE CONTROLLERS
- SWING GATE CONTROLLERS
- ROLLING SHUTTER CONTROLLERS
- PEDESTRIAN ACCESS GATES
- PARKING BARRIERS
- TRAFFIC BARRIERS



PROMINENT PARTNERS

ZKTeco **FUJICA**[®]

Nice

QUEUE MANAGEMENT SOLUTIONS

► ORGANIZING CUSTOMER FLOW WITH REALTIME MONITORING

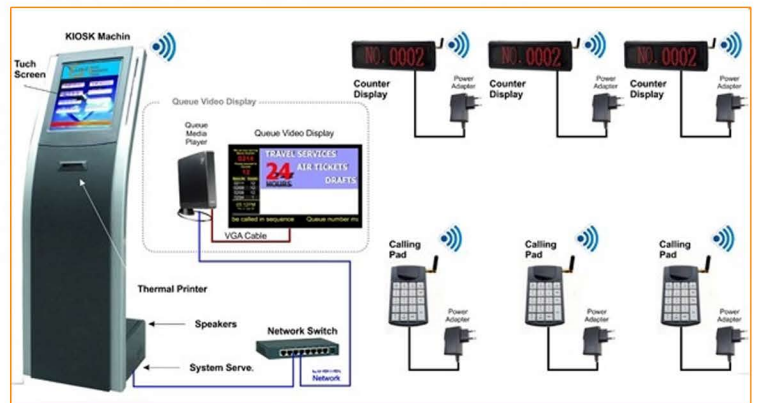


KEY FEATURES

- ORGANIZE CUSTOMER FLOW
- REALTIME MONITORING OF STAFF AND BRANCH PERFORMANCE
- INCREASES SERVICE PRODUCTIVITY
- CENTRALIZED MANAGEMENT

Adopting latest technologies to efficiently manage the customer flow which inturn helps in maintaining a healthy relationship between the business owners and clients and also will make it a hassle free experience for the customers.

TYPICAL SYSTEM

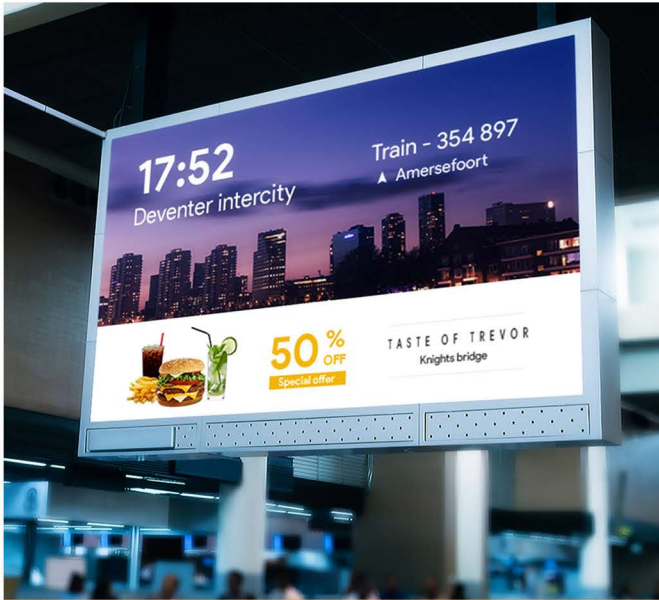


PROMINENT PARTNERS



DIGITAL SIGNAGE

▶ ADVERTISEMENT SOLUTIONS FOR ALL KINDS OF BUSINESSES



Digital Signage system is an HD multimedia display technology that uses screens to comprehensively show company campaigns and real-time notices. The system combines audio, videos, TV images, pictures, animation, texts, documents, websites, streaming media and database data into many amazing programs. And then uses network to release the finished programs to media display terminals everywhere real-time.

TYPES OF SIGNAGES

- MATRIX DISPLAYS
- PORTRAIT/LANDSCAPE KIOSK
- MEETING ROOM DISPLAYS
- MENU BOARDS
- TRANSPARENT SCREENS



WE HAVE EXCLUSIVE PARTNERSHIP WITH MULTIPLE DIGITAL SIGNAGE MANUFACTURERS FROM AROUND THE GLOBE.





CONTACT

Global Security Technology LLC
Office 609, Business Center
Al Khuwair, Muscat, Oman
Ph: +968 24480700
Fax: +986 24481811
Email: info@leamratech.com

www.leamratech.com
www.wajadtuha.com

