

BUSINESS PROFILE

الأمنية العالمية للتقنية ش.م.ش

GLOBAL SECURITY TECHNOLOGY L.L.C

Your Gateway to Smart Technologies for a Safer Tomorrow

OUR COMPANY

VISION & VALUES

We are one among the leading companies in the recruitment of tracking, security, telecommunications and high-end technology products & solutions.

We deliver advanced products and intelligent solutions developed at our own solution center and research department in cooperation and partnership of giant group of companies and global factories that serve the diverse sectors of businesses with multiple technical products and solutions at all levels.

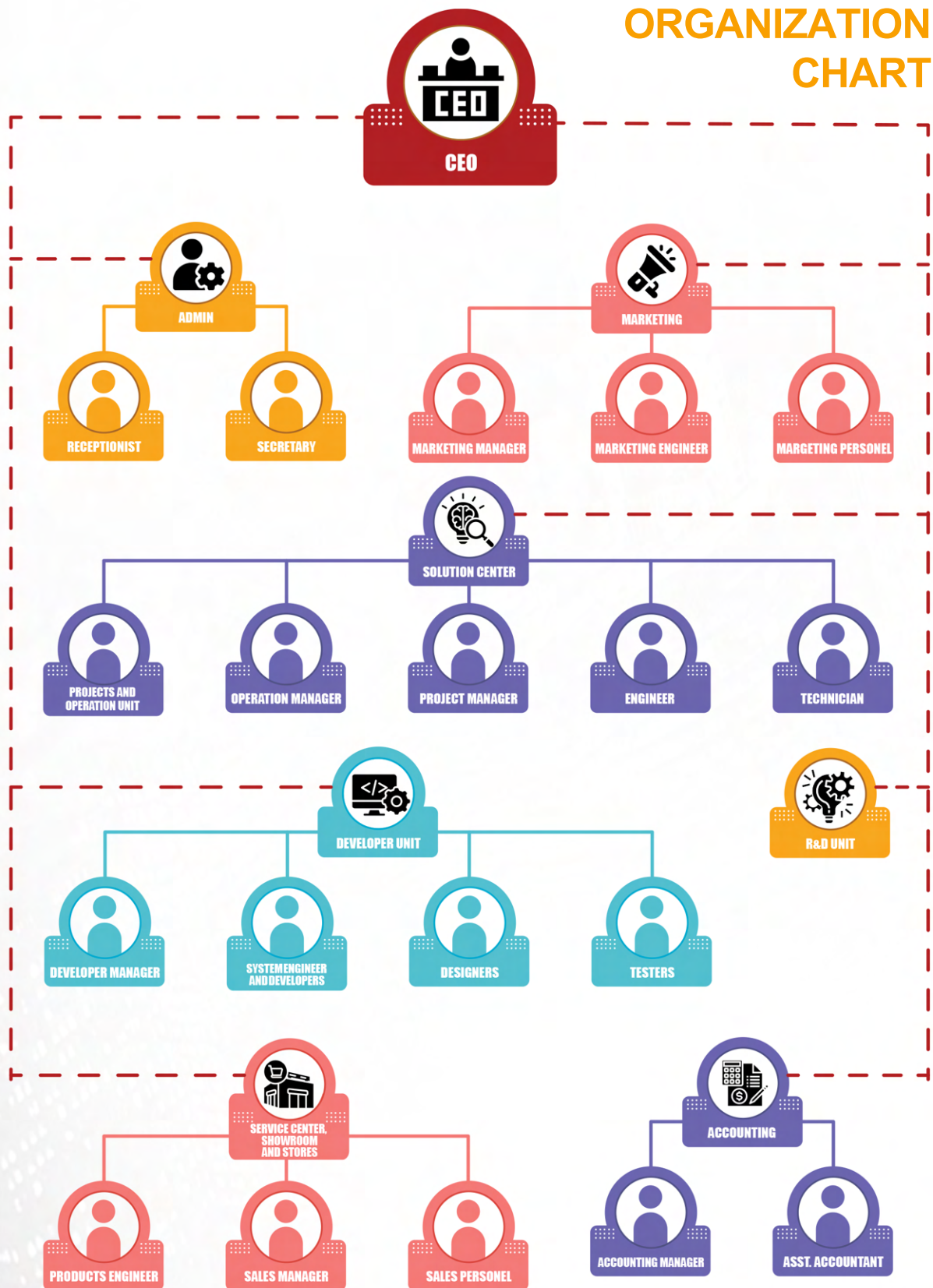


We **Believe** in
Continuous **Expansion** of
Our **Business**

Global Security Technology headquarter is based in Muscat, Oman

OUR TEAM

ORGANIZATION CHART



SOME OF OUR PROMINENT CLIENTS



SULTANATE OF OMAN
MINISTRY OF DEFENCE
HEADQUARTERS
Sultan of Oman's Land Forces
P. O. Box 6802
Muscat



تيجان للمفروشات س.م.م
Teegan FURNISHING LLC



Sultanate Of Oman
Ministry Of Education



Sultanate of Oman
Ministry of Manpower



جامعة السلطان قابوس
Sultan Qaboos University



ONTC
oman national transport company
S.A.O.C



مشاريع أبو كميل الوطنية
ABU KUMAIL NATIONAL PROJECTS



وزارة الشؤون الرياضية
Ministry of Sports Affairs

Sultanate of Oman
Al Raffd Fund



مسقط جراند مول
MUSCAT GRAND MALL



المركز الإحصائي
للمجلس التعاون لدول الخليج العربية
GCC-STAT

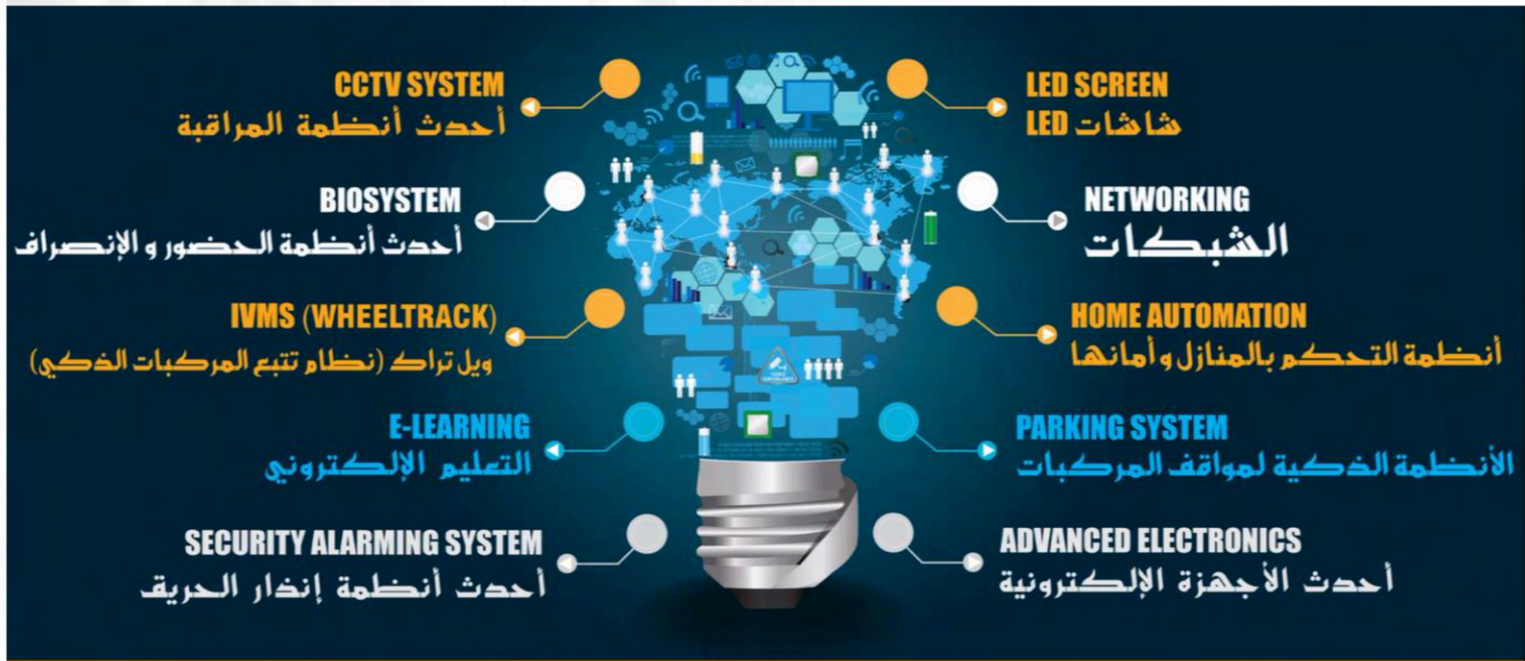


Barka Mall
Suggested Front Elevation

GLOBAL SECURITY TECHNOLOGY LLC



LINE OF BUSINESS



GLOBAL SECURITY TECHNOLOGY LLC



WHO WE SERVE

GOVERNMENT ORGANIZATIONS

EDUCATION & LEARNING

LOGISTICS & CARGO

E-COMMERCE & RETAIL

SPORTS & ENTERTAINMENTS

TRANSPORTATION

TELECOM

OIL & GAS

HOSPITALITY

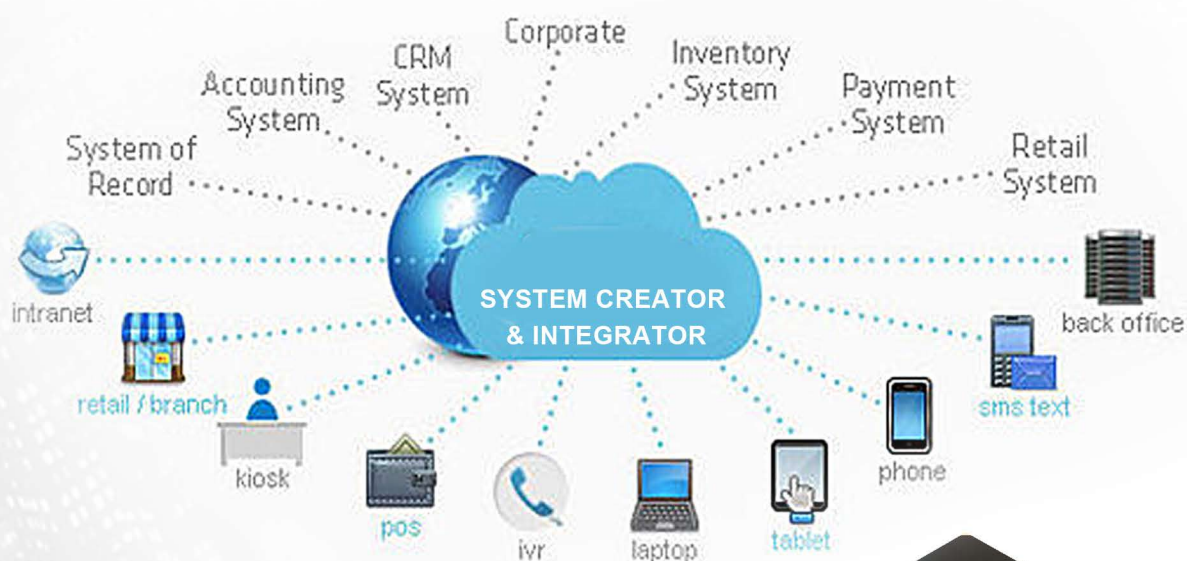
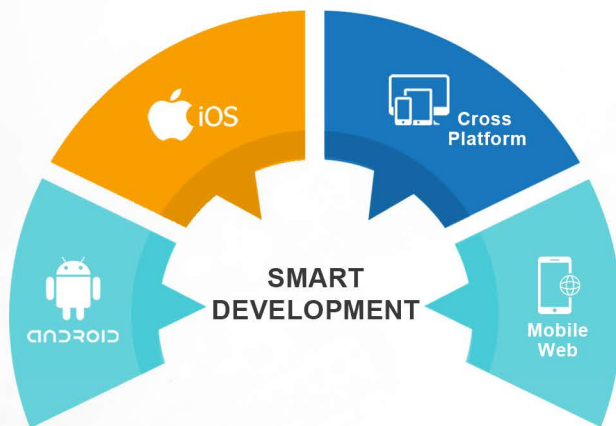
HEALTH CARE

HOME & OFFICE

AUTOMOBILE



SERVICES WE OFFER



OUR PRODUCTS

Our in-house developed Smart Transportation products are crafted with latest technologies in the market with utmost care to even minute details and are designed with a futuristic vision by our R&D team

S
O
F
T
W
A
R
E



WAJADTUHA

PERSONAL VEHICLE TRACKING

A ready to use out of the box all in one tracking & management solution for your personal vehicles.



DARBK SALAMA

SCHOOL BUS MANAGEMENT

A unique system designed for the protection and management of students and school buses with monitoring facility for school management, Local authorities as well as the parents.



WHEELTRACK 360

FLEET MANAGEMENT SOLUTION

safeguard and monitor every movement of vehicle fleets with the state of the art GPS tracking and management technology. Customized and automated reports. Multi-platform integration.

WAJADTUHA



SMART TRACKING SOLUTION

High-end video surveillance systems for both commercial and industrial sectors.

SYSTEM FEATURES

www.wajadtuha.com



Wajadtuha- The first and one of it's kind solution in the market designed with an aim to safe guard the private trasportation. A smart and effective solution dedicated and focused to ensure highest level of security for the vehicles, individuals, familes and the society in both private and public transportation sector.

Wajadtuha EYE



An all in one Dashcam and tracking solution with dual camera recording for both outside and inside the vehi- cle and built in Wi-Fi sharing.

Wajadtuha GPS



An intergrated OBD Smart Tracker with builtint Wi-Fi sharing. OBD interface pro- vides in vehicle diagnostics data also to the smart phone application so that not only the location but also the health of your vehicles can be monitored through our Wajadtuha application.

DARBK SALAMAH

► SCHOOL BUS SECURITY, MONITORING AND MANAGEMENT SOLUTION

Online True Tracker

SMS/ App Alert

Auto Attendance

Emergency STOP

Live CCTV

Portal Management

Full Mobile Apps Set for Parent, Driver and School fleet Management

Easy Installation

Other Customized Features

FEATURES

- Securing pick up and drop of students...
- Live Tracking of school bus & it's specified route throughout the journey.
- Better time management.
- Automated attendance and monitoring activity inside the bus.
- SMS / Apps Online notification to respective parents about their child's movement.
- All in affordable price.
- Many Others Features...

Make your kid's school journey Safer than Ever

GST presents DARBK SALAMAH a complete solution from concept to completion by tracking all the steps your child takes during the full journey.

Come join us and help us to make a safer world for tomorrow's Generations.

DARBK SALAMAH

Presented By

GLOBAL SECURITY TECHNOLOGY

Join Us with Social Media

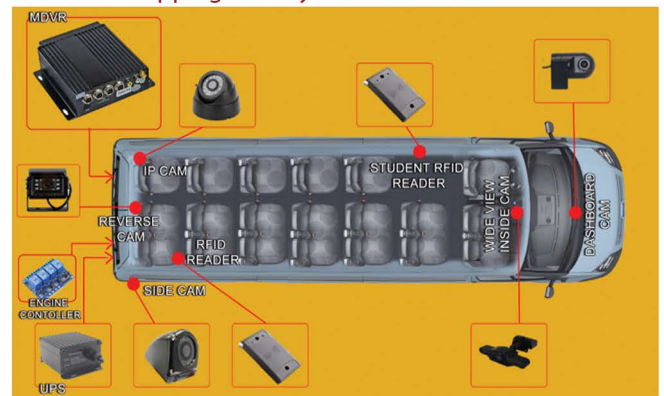
[f](#) [t](#) [i](#) [v](#)

FEATURES

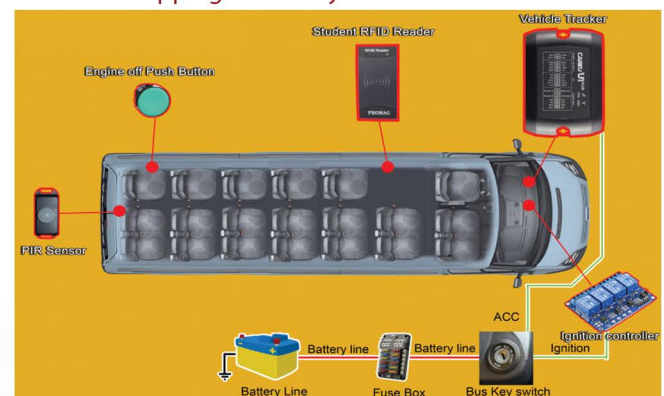
- INSTANT, PERMANENT AND EFFECTIVE VISUAL MONITORING OF STUDENTS, THEIR LOCATIONS AND THE BUS, FROM THE MOMENT THE STUDENT GETS ON THE BUS, ARRIVES AT SCHOOL AND RETURNS HOME.
- THE CENTRAL SAFETY PATH SYSTEM, WHICH IS LINKED TO THE EDUCATIONAL PORTAL IN REAL TIME, AND CONSISTS OF SEVERAL SYSTEMS TO MANAGE AND FOLLOW UP ON SCHOOL STUDENTS AND BUS DRIVERS WITH THEIR BUSES.
- INTEGRATED BUS ROUTE CHARTING APPLICATION SYSTEM VIA ANDRIOD / IOS APP
- ANDRIOD / IOS APP SYSTEM
- ALERTS AND TEXT MESSAGING SYSTEMS TO FOLLOW THE STUDENT'S MOVEMENT AND DRIVER'S BEHAVIOR.
- AUTOMATIC DETECTION SYSTEM FOR THE DETENTION OF THE STUDENT IN THE BUS AFTER IT IS CLOSED AND ABANDONED BY THE DRIVER.
- STUDENT ATTENDANCE SYSTEM.
- REAL-TIME REPORTS AND STATISTICS.
- AUTOMATIC STUDENT COUNTER SYSTEM.
- STUDENT DESCENT AND ASCENT SYSTEMS TO THE EDGE.
- THE ABILITY TO ADAPT THE SYSTEM AND INSTALL IT WITH OTHER SYSTEMS PROGRAMMATICALLY.
- LOTS OF OTHER ADVANTAGES.

The darbk salamah system provides many special features that will allow the schools and students' families to track the route of school buses and inquire about many other cases related to buses through multiple service

Hardware Mapping - Full System with Video



Hardware Mapping - Partial System without Video



WHEELTRACK 360



▶ ALL IN ONE ENTERPRISE IVMS FLEET MANAGEMENT SOLUTION

www.wt360.wheeltrack.com



KEY FEATURES

- Real –time Vehicle Tracking
- Advanced Fleet Management
- Event Based Alerting
- Multiple Generated Reports
- Built-in & Custom Sensors
- Real-time Vehicle Position report
- Multiple Maps Source
 - Google Maps
 - Customs Maps
- Customizable POI
- Web-based Trip player, etc.
- Alerting Sensors

WheelTrack360 is one of the best in class GPS tracking solutions which can help you to affordably manage your company's vehicles, protect business and personal property, monitor/locate your assets. Wheeltrack is an advanced, real-time and multi-language tracking system which is reliable and effective cutting edge GPS vehicle tracking and fleet management.

SYSTEM ARCHITECTURE



Geospatial Mapping Platform

WheelTrack provides many Geospatial Mapping Platforms which offers client scalable, stable, flexibility, robustness for building and managing fleets. Wheel Track provides many Geospatial Mapping Platforms:

1. Google Maps including Road, Satellite & 3D View.
2. Custom Maps including specific areas defined or drawn of a client.



OUR SOLUTIONS

We are specialized in providing high-end security and IT solutions suitable for various private and public organizations.

 Intelligent Parking Solution

 Public Address System

 Gate Automation

 Network and Wireless Solution

 Home Automation

 Building Management System

 RFID Solutions

 Point of sale

 Fleet Management

 Smart Transportation

 CCTV System

 Time Attendance System

 Digital Sinage

 LED Screen

 Queue Management System

 E- learning

CCTV SOLUTION

► High-end video surveillance systems for both commercial and industrial sectors.



TYPES OF CAMERAS

- DOME CAMERA
- BULLET/GUN CAMERA
- PTZ CAMERA
- 360° PANORAMIC CAMERA
- LPR(License plate recognition Camera)
- MOBILE CAMERA(for deployment in different types of vehicles)
- EXPLOSION PROOF CAMERA

We use a mix of the most current and best in class cameras, lens, lighting, hardware, and software components to ensure uninterrupted and secure surveillance 24/7 which meets the requirements of client from multiple sectors, such as retail premises, educational establishments, industrial sites, offices, high-secure government facilities, Oil & Gas, banks etc.

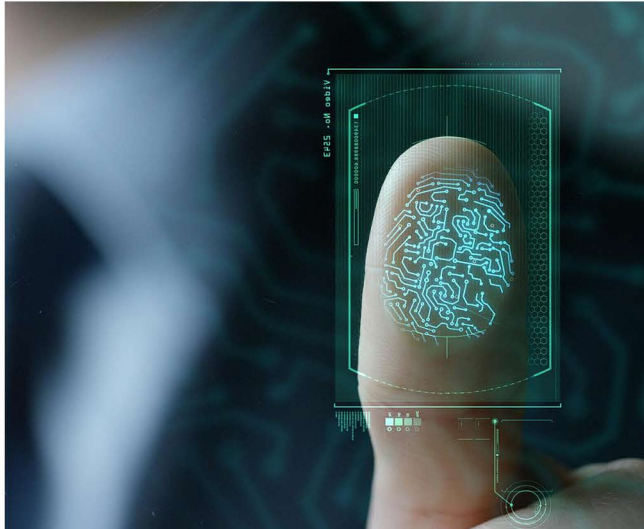


PROMINENT BRANDS USED FOR OUR PROJECT DEPLOYMENT



BIOMETRIC SOLUTIONS

BIOMETRIC ACCESS & TIME ATTENDANCE SOLUTIONS

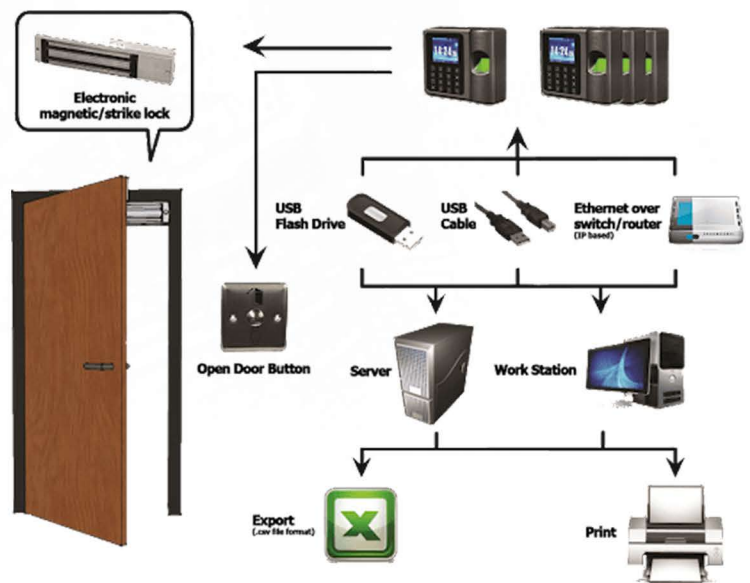


TYPES OF BIOMETRIC SYSTEMS

- FINGERPRINT ACCESS & ATTENDANCE
- FACIAL RECOGNITION SYSTEM
- IRIS SCANNERS
- INTEGRATED FACIAL RECOGNITION SYSTEM WITH TEMPERATURE SENSORS

Biometric Systems provided by Leamratech is with the best in class technology, with its prime focuses in distributions of products such as attendance system, fingerprint scanners, facial recognition, security & surveillance products.

ACCESS CONTROL SYSTEM ARCHITECTURE



PRODUCTS

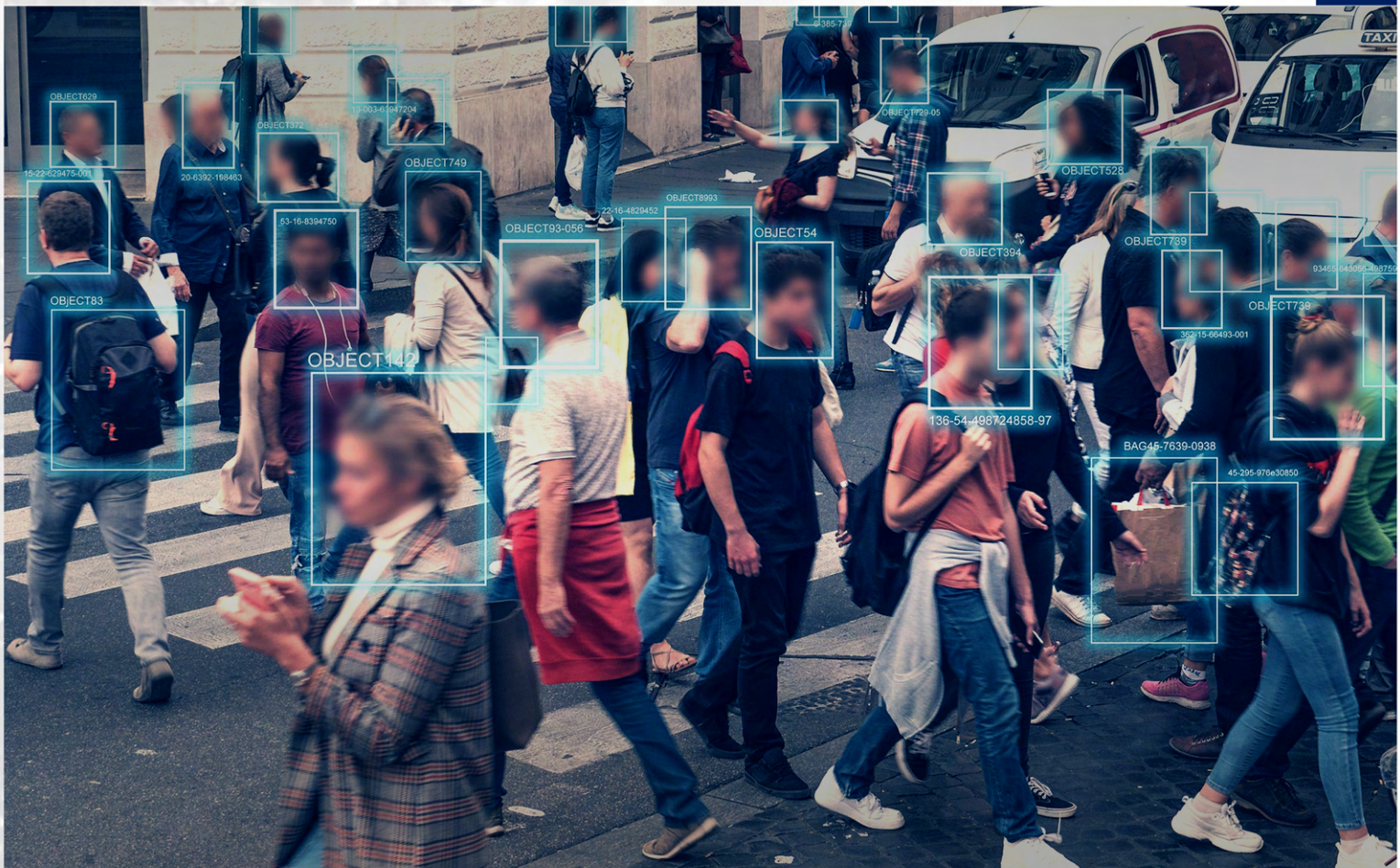
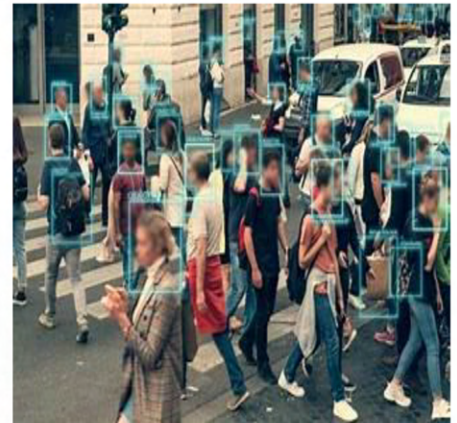
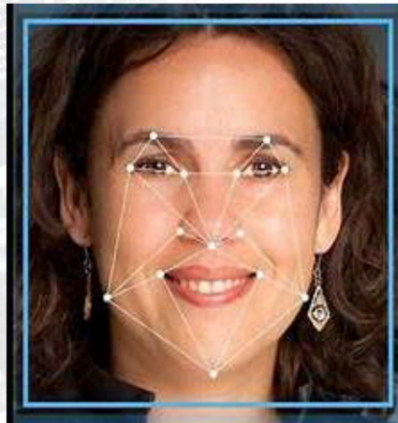
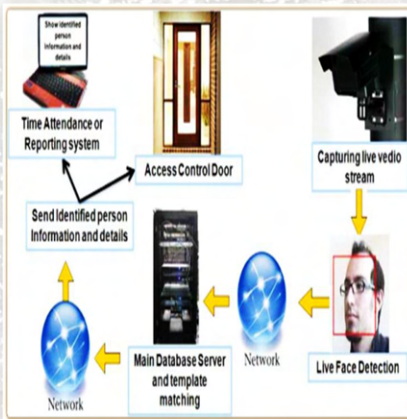


PROMINENT PARTNERS



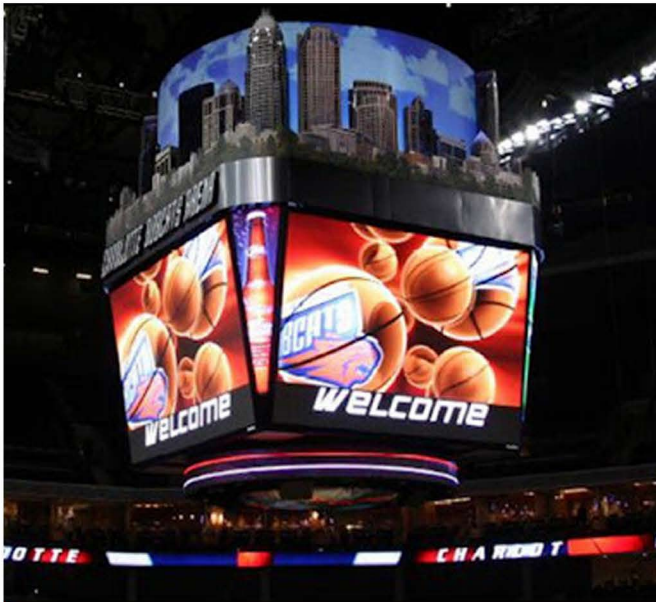
BIOFACE

Facial recognition system that takes speed and performance to unprecedented levels. It empowers you with the ability to perform facial searches across vast databases. User-friendly software that provides indisputable personal verification for your workforce. Offers enhanced security, superior speed, and accurate results. Can say goodbye to manual data entry and cumbersome paper registers. Stores employee IN & OUT times as soft data. Enables efficient shift management, staff scheduling, accurate leave calculations, and monitoring of employee arrivals and departures.



LED SCREEN

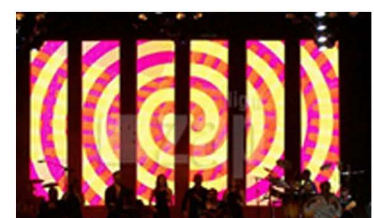
► High-end large format LED video walls and advertisement displays.



TYPES OF LED SCREENS

- OUTDOOR LED SCREEN
- INDOOR LED SCREEN
- MOBILE LED SCREENS
- 360° PANORAMIC CAMERA
- FLEXIBLE LED SCREENS
- PORTABLE STAGE LED SCREENS
- LED SPORTS SCORE BOARDS

GST is tied up with world-class manufacturer and provider of high quality LED displays solutions. We supply LED media facades, indoor and outdoor LED screens, and flexible curtains. GST is one of the leading LED solution provider for: stadiums, sports, arenas, advertisement screens, architectural and stage.



CERTIFIED GOLD PARTNERSHIP
WITH THE FOLLOWING WORLDCLASS
MANUFACTURERS



WE USE THE BEST IN CLASS LED CHIPS
IN THE MARKET FROM



GATE AUTOMATION

► GATE AUTOMATION FOR PERIMETER PROTECTION



TYPES OF GATE BARRIERS

- SLIDING GATE CONTROLLERS
- SWING GATE CONTROLLERS
- ROLLING SHUTTER CONTROLLERS
- PEDESTRIAN ACCESS GATES
- PARKING BARRIERS
- TRAFFIC BARRIERS

Barrier gates are the ideal solution if you need to control vehicle transit in public parking areas, car parks, private and block of apartment entrances, even when the traffic is heavy. It also helps in the control of the flow of people with multiple security and access control options. They are made of a motor body and control unit, protected by a case with different finishes, in particular in stainless steel for applications in critical environment conditions, like heavy traffic areas or near the sea.



PROMINENT PARTNERS

ZKTeco **FUJICA®**

Nice

QUEUE MANAGEMENT SOLUTIONS

► ORGANIZING CUSTOMER FLOW WITH REALTIME MONITORING

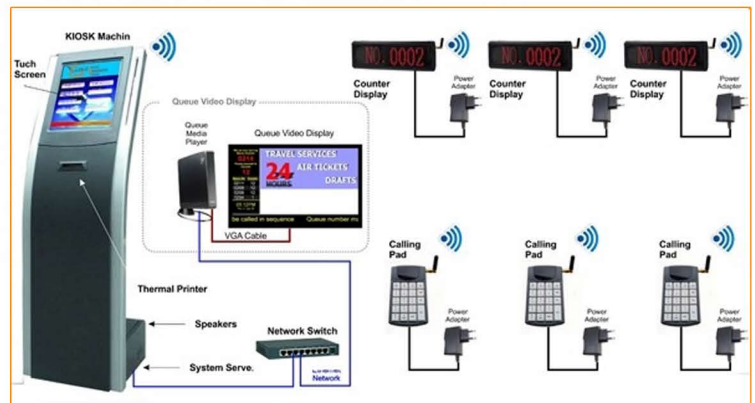


KEY FEATURES

- ORGANIZE CUSTOMER FLOW
- REALTIME MONITORING OF STAFF AND BRANCH PERFORMANCE
- INCREASES SERVICE PRODUCTIVITY
- CENTRALIZED MANAGEMENT

Adopting latest technologies to efficiently manage the customer flow which inturn helps in maintaining a healthy relationship between the business owners and clients and also will make it a hassle free experience for the customers.

TYPICAL SYSTEM

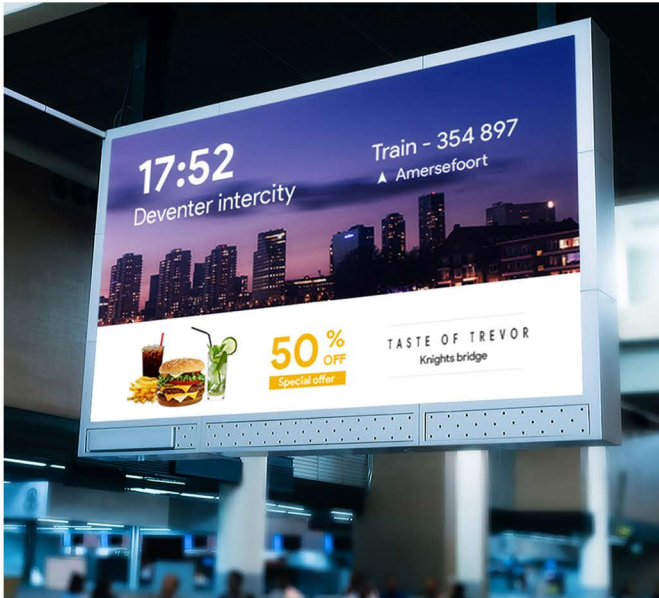


PROMINENT PARTNERS



DIGITAL SIGNAGE

► ADVERTISEMENT SOLUTIONS FOR ALL KINDS OF BUSINESSES



TYPES OF SIGNAGES

- MATRIX DISPLAYS
- PORTRAIT/LANDSCAPE KIOSK
- MEETING ROOM DISPLAYS
- MENU BOARDS
- TRANSPARENT SCREENS

Digital Signage system is an HD multimedia display technology that uses screens to comprehensively show company campaigns and real-time notices. The system combines audio, videos, TV images, pictures, animation, texts, documents, websites, streaming media and database data into many amazing programs. And then uses network to release the finished programs to media display terminals everywhere real-time.



WE HAVE EXCLUSIVE PARTNERSHIP WITH MULTIPLE DIGITAL SIGNAGE MANUFACTURERS FROM AROUND THE GLOBE.

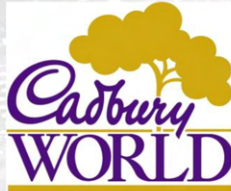


WebDT by DT Research

DIGITAL SIGNAGE SOFTWARE

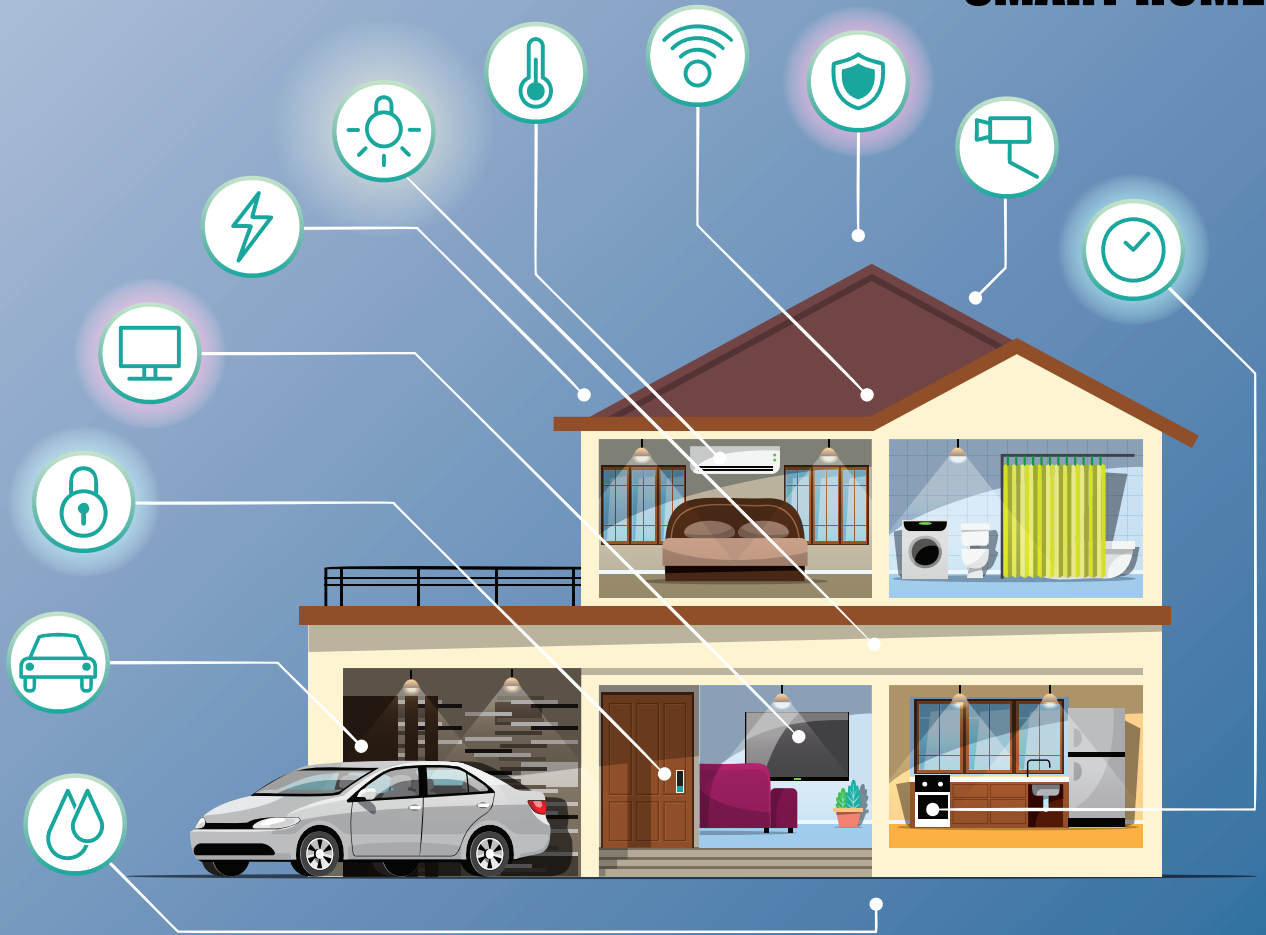


SOME OF OUR PROMINENT CLIENTS

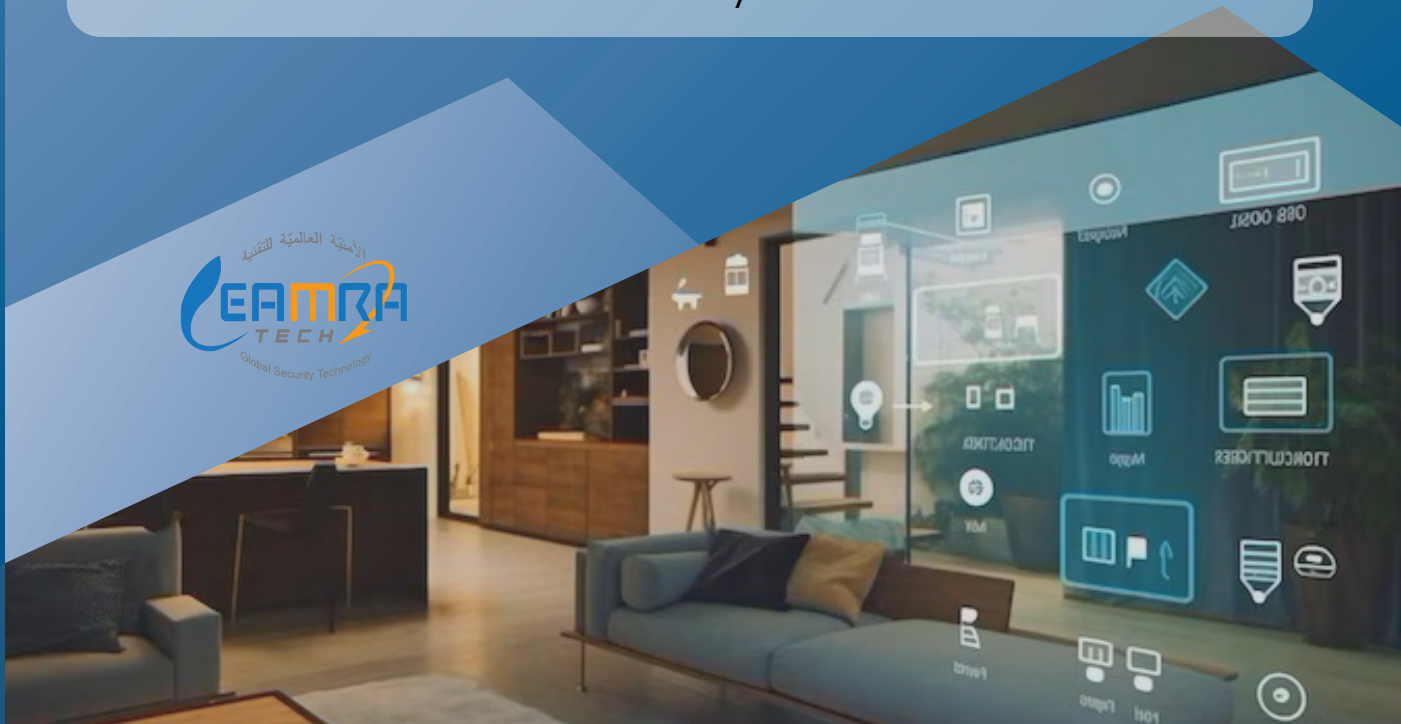


SMART HOME

SMART HOME

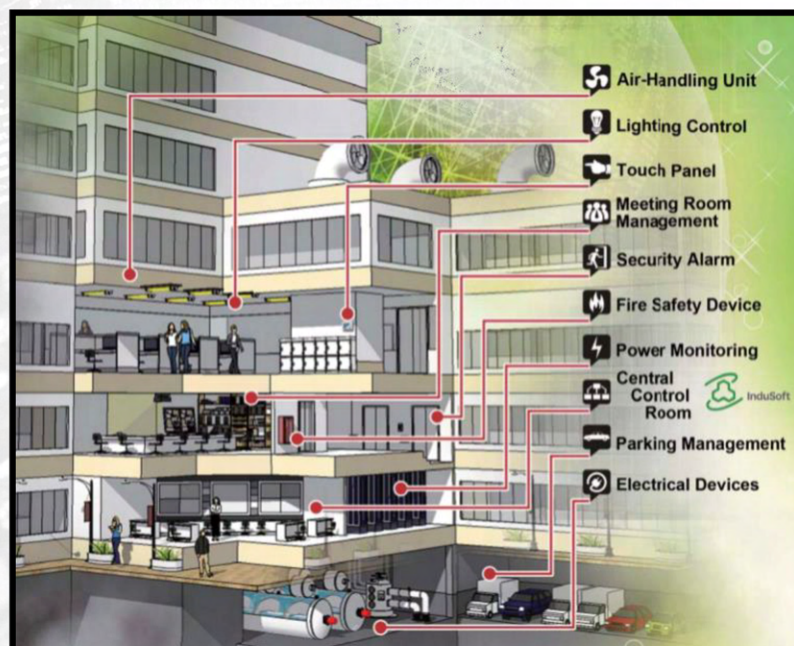


LEAMRA-TECH is revolutionizing the concept of modern living with its cutting-edge smart home solutions. Our integrated technologies seamlessly blend convenience, comfort, and security, empowering homeowners to control every aspect of their living spaces with ease. From intuitive home automation systems to advanced security protocols, our innovative products ensure that homes are not just smart, but also safe and energy-efficient. With LEAMRA TECH, welcome to a future where your home truly becomes an intelligent extension of yourself.



SMART BUILDING / HOME MANAGEMENT SYSTEM

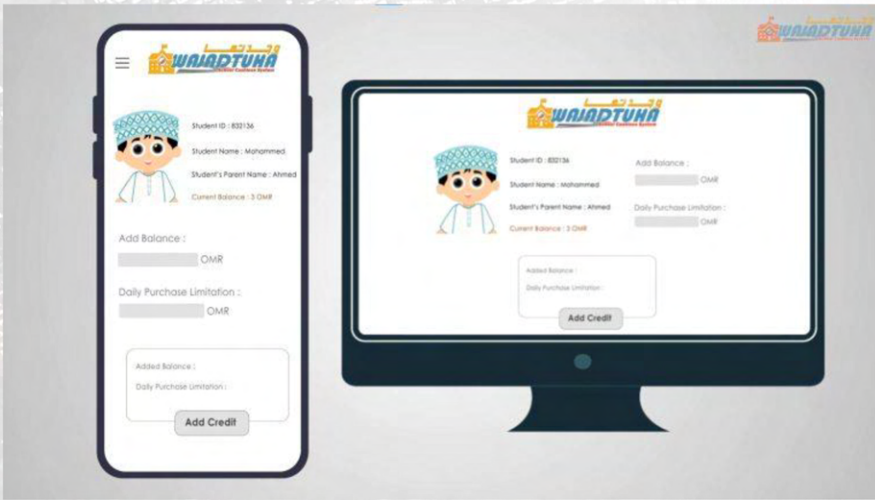
With the advance of the electronic technology and network communication technology and with a variety of embedded applications and applications of Internet of Things getting involved, the Smart Building / Smart Home is getting more and more popular.



WAJADTUHA CASHLESS



Our payment system for students is a game-changer in the world of education. By combining cutting-edge facial recognition technology with traditional card payment methods, we have created a system that is convenient, secure, and efficient. With our payment system, students can easily pay for meals, using their face or a special RFID student card. Our facial recognition technology is highly accurate and reliable, allowing students to quickly and easily make purchases without the need for cash or a physical card. The process is simple - students simply look into the camera, and our system does the rest, the system will detect the required amount from there balance.



POINT OF SALE

GST provides one of the most reliable and durable point of sale (POS).

At the point of sale, the merchant would prepare an [invoice](#) for the customer (which may be a cash [REGISTER](#) printout) or otherwise calculate the amount owed by the customer and provide options for the customer to make payment. After receiving payment, the merchant will also normally issue a [receipt](#) for the [TRANSACTION](#). Usually the receipt is printed, but it is increasingly being dispensed electronically.

HOW IT WORKS?



SOME PROMINENT PARTNERS

FORTINET

acer

Honeywell

LOC
STORE MANAGEMENT SUITE

POSitouch

Retalix
Channel Partner

AM/PM U-POS Restaurant Management

AM/PM Store Dynamics

squirrel
systems



RFID

RFID- Radio Frequency Identification

LEAMRA active/passive RFID technology provides RFID Access Control systems which can provide in-dependent, non-stop systems for security, parking, and access control.

Our RFID technology provides business and communities with hands-free control to ensure only authorized vehicles have entry. The system can also provide access data for administering periodic access charges or parking fees.

RFID- LEAMRA-PARK

LEAMRA PARK is sophisticated, automated Parking & Building Access & Revenue Control system; designed to have full control over large complex Parking garages and commercial building and avoid revenue leakages. Access Control over a large complex can prevent vandalism and crime by having a proper check on everyone that enters and exits from garages, buildings, etc.

Other RFID Solution:

- ✚ **ASSET MANAGEMENT SOLUTION**
- ✚ **PERSONAL TRACKING SOLUTION**

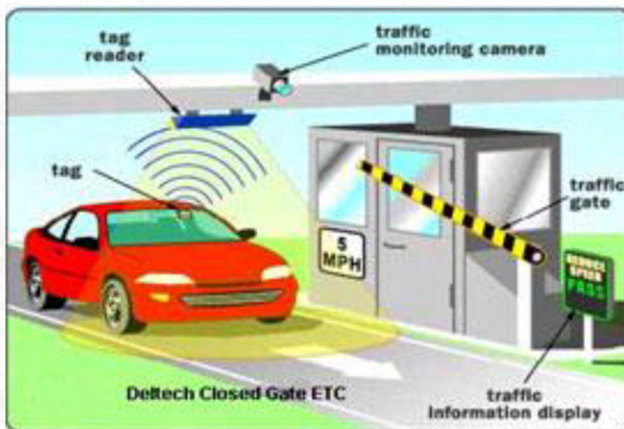
SOME PROMINENT PARTNERS:



RFidTUTORIAL

Intermec

RFIDmedia



E-LEARNING

GST- LEAMRATECH holds years of experience in offering the most up-to-date e-learning equipments all across the globe. Our leading products are deployed in diverse fields including Digital Podiums and LCD Interactive Boards etc. which help both businesses and institutes to enjoy modern technology in meeting rooms and learning environments alike.

DIGITAL PODIUM

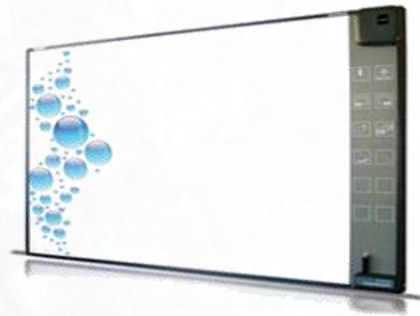
Digital Podium system enables the users to write on a tablet Monitor with a built-in podium, the cutting-edge system allows the user to directly write on a multiple teaching plan and save the images along with voice, for the easy production of multimedia learning contents.

KEY FEATURES:

- It can realize full-automation and security function for lecturer with internal installation of RFID system.
- Supplying the powerful for writing/drawing/recording

KEY FEATURES:

- HD-ready with vibrant color and clear display
- Easily and accurately recognizes pen or finger movement and track the user anywhere on the screen
- Utilizes the smart tools to provide an intuitive end user experience
- Offers perfect solution for customers implementing a collaborative workspace but lack the space for whiteboard and projector set-up
- Integrates with PC's, Laptop, Audience Response System, Projectors, Visualizes, portable document cameras, Slate-writing tablets and all kinds of ICT and AV solutions.



NETWORKING

Networking Products & Solutions – Connect with Innovation

In today's advanced world it has become essential to have latest IT equipments both at home and at workplace. So it is a must for technology enthusiasts like you to be equipped with the best networking products available with us.

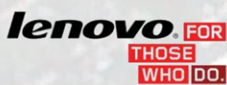
Global Security Technology offers a wide range of high quality branded networking products. Not only that, we provide complete networking solutions and services to our clients.

*For Home/Residential

- Wireless Internet Routers
- Wireless Internet Adapters
- Wireless Range Extenders
- Wired Ethernet Routers & Modems
- Switches & Access Points
- Data Storage Devices
- Wireless Mobile Broadband Products
- Home Theater Equipment
- Network Powerline Products

*For Businesses

- Network Topology Design
- Servers
- PC & laptops
- Printers & Scanners
- Network Consultancy
- Switches
- Wireless Internet Routers
- Wireless Internet Adapters
- Firewalls
- Network Security
- Wireless Network
- Network Components



NETWORKING

NETWORKING

Networking Products & Solutions – Connect with Innovation

DESKTOPS

LAPTOPS

ALL IN ONE PC

MINI PC

WORKSTATIONS



NETWORKING

INTEGRATION

Unlock the full potential of your business with our seamless Integration Solutions. We understand that in today's interconnected world, efficient communication and data flow between systems is paramount for success. Our Integration Solutions empower you to effortlessly connect and synchronize your disparate applications, platforms, and databases, enabling smooth collaboration, streamlined processes, and enhanced productivity. Our Integration Solutions are designed to adapt to your unique business requirements, ensuring a tailor-made solution that aligns with your goals.



CONSULTANCY

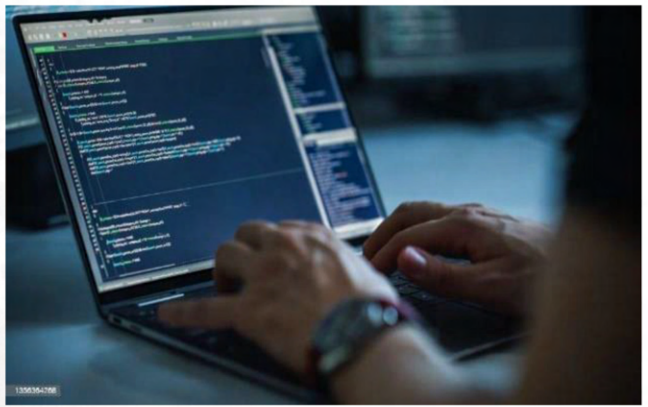
Stay ahead of the curve with our Tech Consultancy Solution. In today's fast-paced and ever-evolving technology landscape, businesses need expert guidance to navigate the complexities and leverage the latest innovations. Our team of seasoned technology consultants is dedicated to understanding your unique business needs and providing strategic advice and solutions that drive growth and maximize your technological investments. With our Tech Consultancy Solution, you gain access to a wealth of industry knowledge and expertise. Our consultants stay at the forefront of emerging technologies and industry trends, ensuring that you receive up-to-date insights and recommendations.



SOFTWARE DEVELOPMENT AND WEB DESIGNING

Software development can be a collaborative effort involving software developers, designers, testers, project managers, and other specialists. It's used to create a wide range of applications, from simple mobile apps to complex enterprise systems, and it plays a crucial role in today's digital world, powering everything from websites and games to business software and embedded systems.

Creation of websites and pages to reflect a company's brand and information and ensure a user-friendly experience. Our experts boost your company's success by achieving your company website requirements.





CONTACT

Global Security Technology LLC
Office 609, Business Center
Al Khuwair, Muscat, Oman
Ph: +968 24480700
Fax: +986 24481811
Email: info@leamratech.com

www.leamratech.com
www.wajadtuha.com

